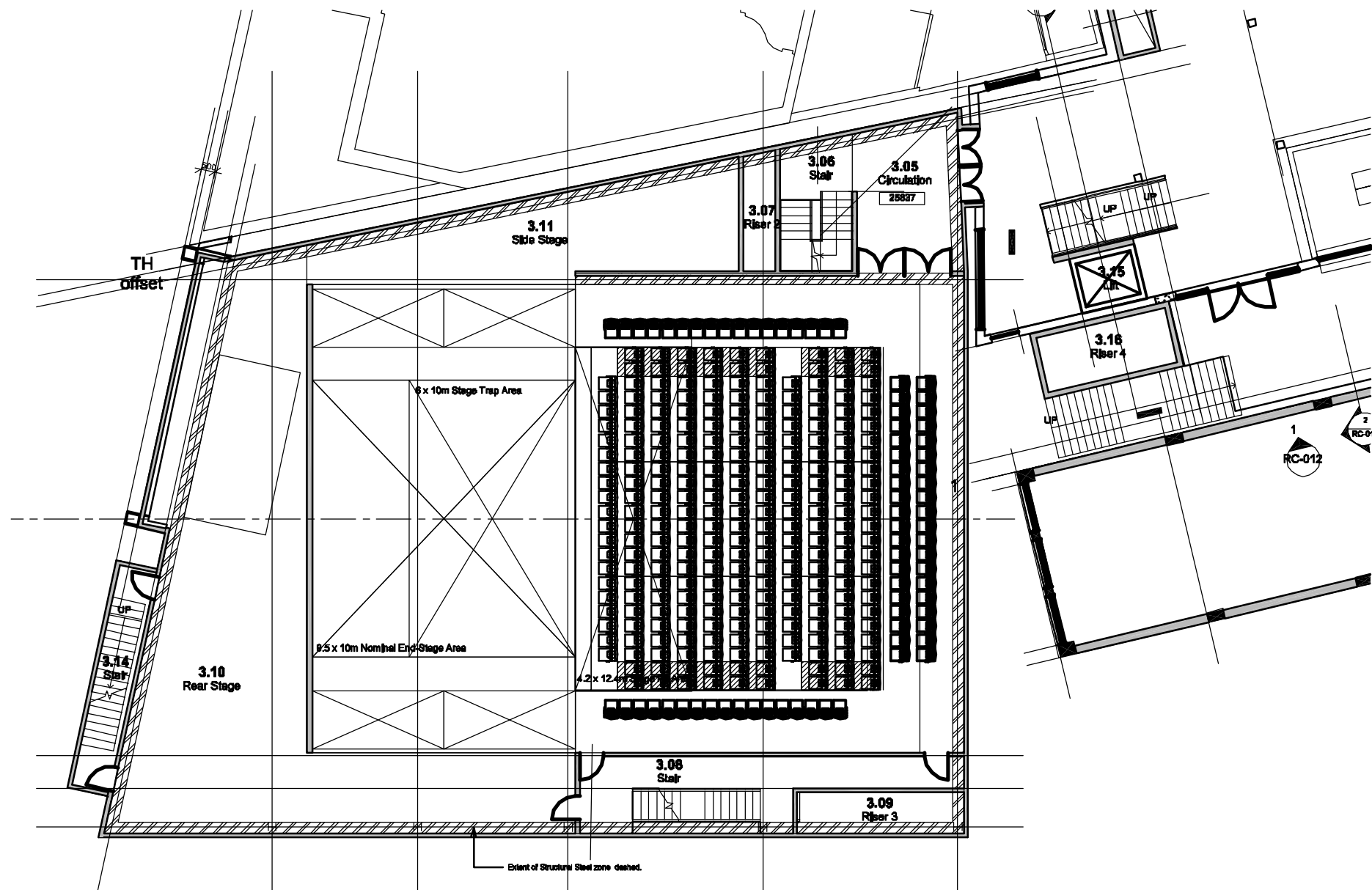
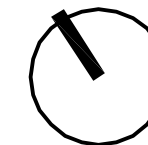


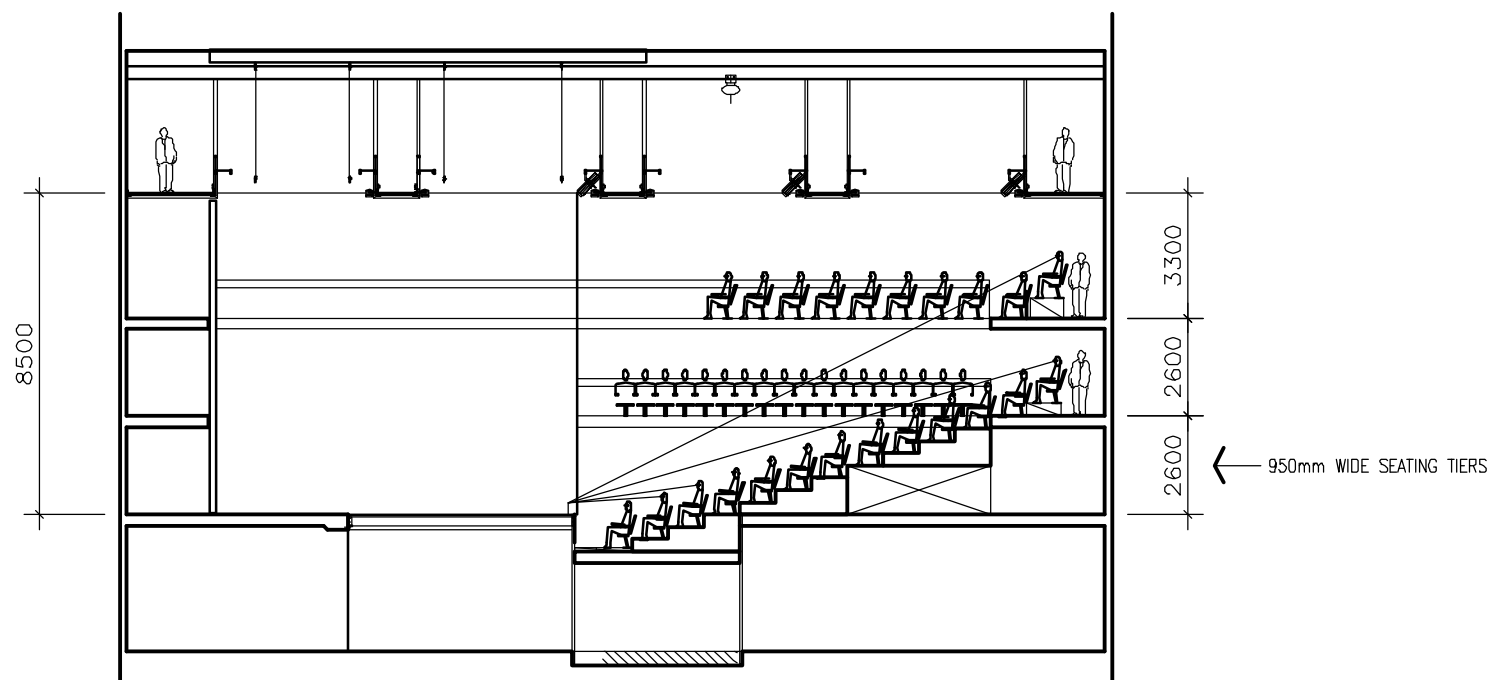
Copyright of this drawing is vested in Williams Ross Architects and the drawing shall not be reproduced or copied in whole or in part, in any form, without the prior written approval of Williams Ross Architects.

Suite 1, 70 Kerr Street
 Fitzroy Victoria 3065 Australia
 T 61 3 9416 3044
 F 61 3 9416 3232
 www.williamross.com



END STAGE FORMAT

Stalls:	220 Seats (20 seats x 11 rows)
Gallery 1:	74 Seats (2 rows rear / 1 row sides)
Gallery 2:	74 Seats (2 rows rear / 1 row sides)
TOTAL SEATS:	368 SEATS
	950mm Row width generally
	1050mm Aisle width generally (2 Seats)



Cheshire
williams ross architects

Q Theatre 305 Queens Street, Auckland

Seating Layouts
 End Stage

July 2007
 Scale 1:200@A3
 0641
 SK-WR-30 A