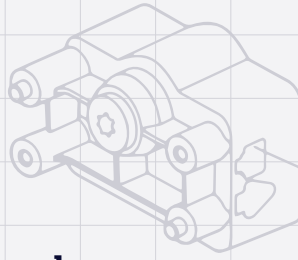


BOOM SHANKAR



AN EXPLOSIVE COMEDY
ABOUT LIFE, LOVE
AND BOMB DEFUSAL

BOOM SHANKAR



DETONATOR

6–16 September 2023

Loft, Q Theatre · 75 mins, no interval



Writer & Actor
BALA MURALI SHINGADE



Writer & Actor
AMAN BAJAJ



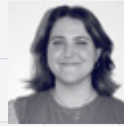
Director & Dramaturg
AHI KARUNAHARAN



Producer
GAYATRI ADI



Stage Manager
CHLOE BETTINA



Lighting Design & Operator
ISABELLE HOSKYN



Costume Design
IMUY TEAV



Set & Props Design
NATASHA IYER



Production Manager
ANDREW MALMO

Clown Mentor
KALYANI NAGARAJAN

Dance Mentor
GEMMA-JAYDE NAIDOO

Bollywood Dance Mentor
SHAWN THOMAS

Voice Mentor
KRISTIE O'SULLIVAN

Hero Image by JULIE ZHU



New Zealand International
Comedy Festival 2021

IMPROVISED EXPLOSIVE DEVICE LMV358

POWER
SOURCE

BLUE / WHITE

PRE-CHARGE
RESISTOR

RED

RED / PINK

TRIGGERING MECHANISM



AGARAM PRODUCTIONS

AGARAM PRODUCTIONS, founded by Ahi Karunaharan in 2013, is a multi-award-winning boutique production house with innovation and ground-breaking creativity at its heart. A pioneering and trailblazing hub for contemporary South Asian voices, Agaram develops and collaborates with artists with a point of difference.

“Agaram Productions is doing vital and invigorating work to shake up and challenge mainstream art.”

– Theatrescenes

THANKS TO: Anirudh Guda and Bhavesh Bhuthadia for helping us construct the set. Prayas Theatre and Auckland Theatre Company for letting us raid your set and costume cupboard! Paul Bennet for the mentorship and sound design help. Gopala Yogurt for existing (this is not a sponsorship).

Lastly, to our families, who enable us to do whatever we want!

BOOM SHANKAR started out as an idea to overturn the trope of a bearded brown man planting bombs by telling a story of a bearded brown man who defuses bombs. The show uses a tongue-in-cheek, comedic view of the world and tackles subjects like regret, love, mortality, and the importance of selecting the right type of yoghurt.

The joy and happiness we received from the audience is what made us strive to make the show bigger and better the third time around. To this end, our talented friend, Ahi Karunaharan, joined us as director and dramaturg, to help us interrogate the script and enhance our ability to showcase this story to the best of our abilities for you, the audience. It takes a village to put a show together and we certainly couldn't have done it without our supportive whānau; our producer and production team.

–**Aman & Bala**









IGNITING TĀMAKI PERFORMING ARTS SINCE 2012

2023 SEASON - AUG — SEP

Welcome to Q's 2023 MATCHBOX season!

This year, we are celebrating three new works by Auckland artists who are leading the way for a generation of theatre and dance makers focused on creating work that explores vital elements of our human experience, how we see ourselves, and our experience of how others view us. This year's season explores the complexities of twinning, evolving definitions of family, and what connection means to us when we get to the end of it all.

This year marks a pivotal change for Q's MATCHBOX programme, where instead of individual productions seeking funding, Q was able to bring the majority of funding to the table, allowing the productions to focus on the creation process and less on seeking funding and managing cash flow. This also provided security to those involved that their season would be able to go ahead. Transitioning the model in this way is game-changing to the way Q is able to engage with artists and make a positive impact on the sector.

None of this would have been possible without the generous support from our funders and donors, Auckland Council, Creative New Zealand, Gus Fisher Charitable Trust and Nancie Plested. We would also like to share a big ngā mihi nui for the support from Terri Cumiskey and Te Ahurei Toi o Tāmaki Auckland Arts Festival, who provided additional human resource to help us deliver this programme at a level we couldn't have delivered alone.

Special thanks to this year's team of creatives for jumping on the new MATCHBOX waka and trusting us to support them in presenting their work. You've all been incredible collaborators and co-producers and we can't wait to see what your creative futures hold.



Q Theatre's
Development Season
is made possible
by the support of



The Gus Fisher Charitable Trust · Nancie Plested

MATCHBOX
2023 SEASON

PUBLICITY
Elephant Publicity

DIGITAL
MARKETING
Pop That

DESIGN
Tim Wong

Q MATCHBOX