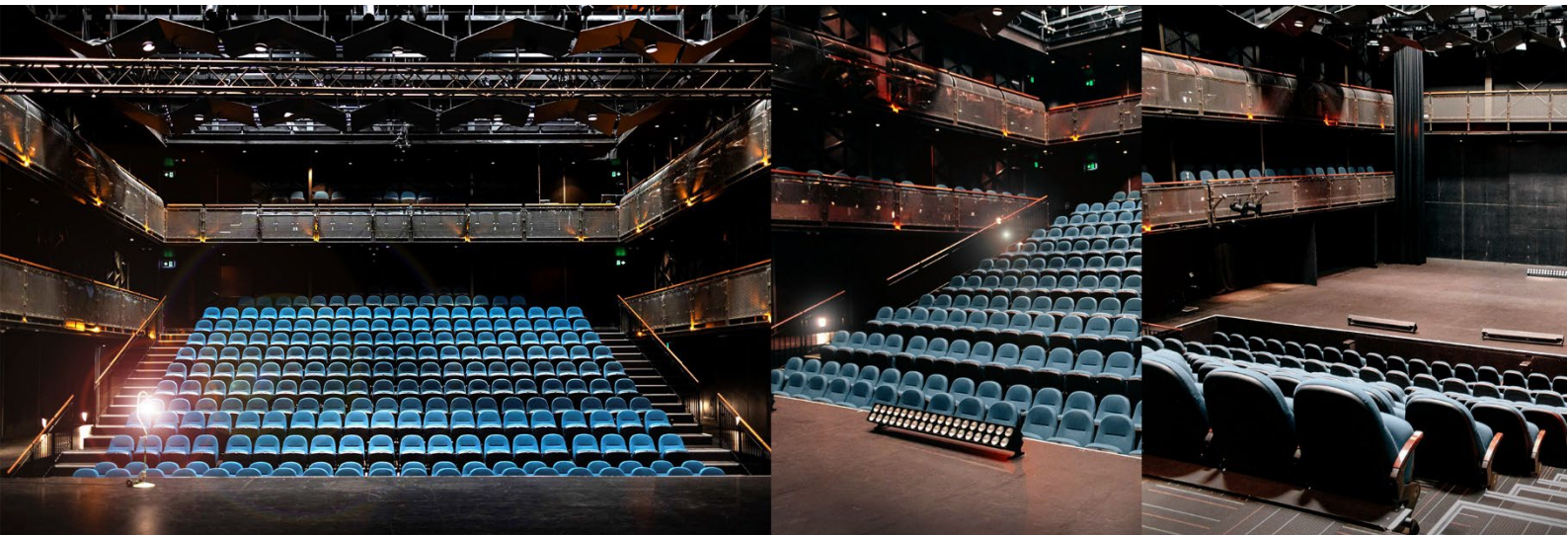


# Q Theatre

## Venue Specifications

# Rangatira



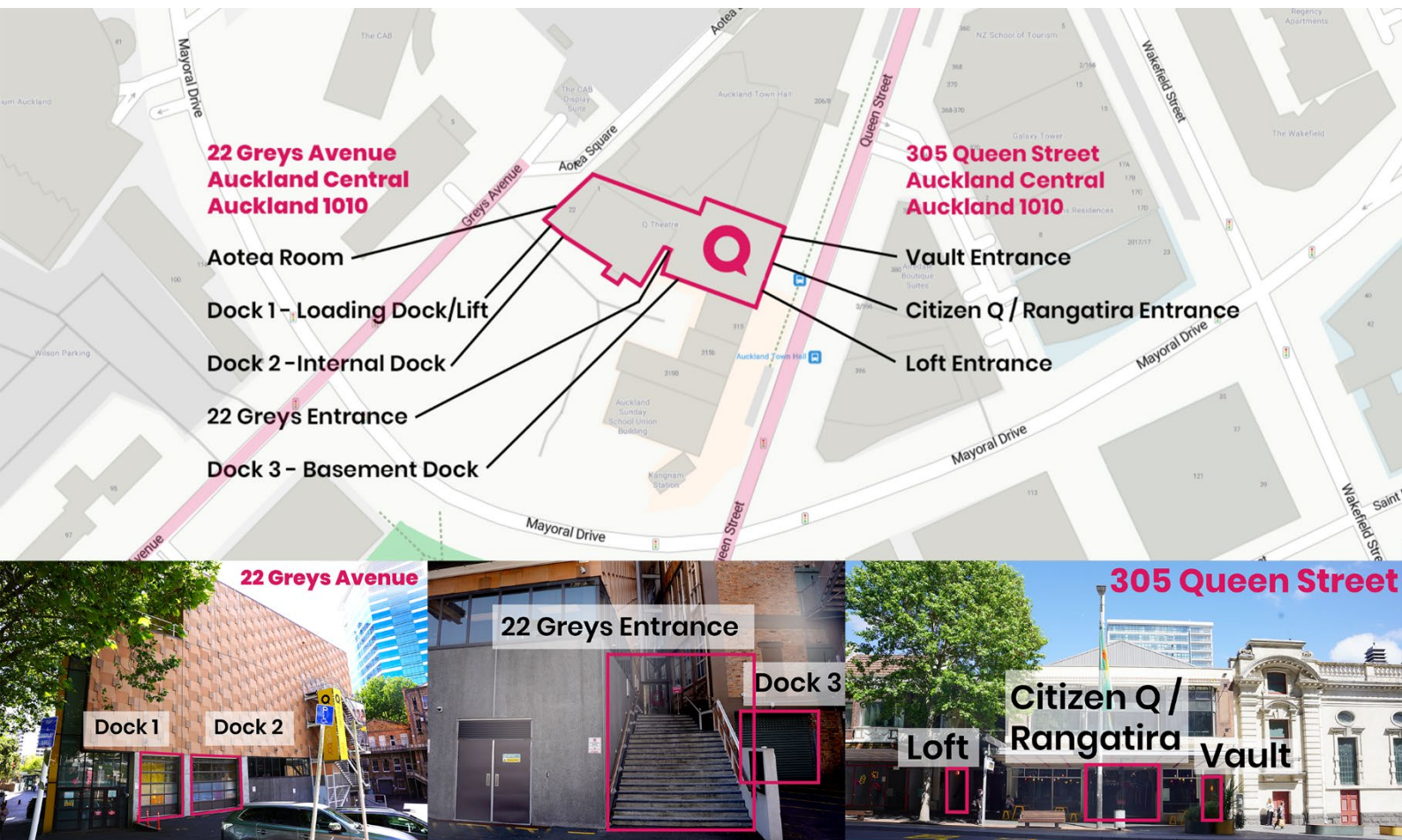
### About Rangatira

Named for the Māori word meaning “weaver of people,” Rangatira is Q Theatre’s largest purpose-built flexiform auditorium featuring modular, fully reconfigurable seating blocks and deployable balcony sections that can be flown in or out to suit production needs. Supporting capacities from 338 to 470, Rangatira accommodates a wide range of established and bespoke layouts—including End On, Thrust, Traverse, In the Round, and Flat Floor. Designed for adaptability, it hosts everything from large-scale theatrical works to live music, conferences, and corporate events.

## Location and Access

The main audience entrance to **Rangatira** is through **Citizen Q (Lounge)** located at **305 Queen Street, Auckland Central, Auckland 1010**. Audiences can also enter at the **22 Greys Entrance**.

Loading **Docks 1 and 2** for **Rangatira** are located at **22 Greys Avenue, Auckland Central, Auckland 1010**.



## Freight Access

Freight access for **Rangatira** is located at **22 Greys Avenue**, loading **Docks 1, 2 and 3**.

### Dock 1 – Stage Dock Lift

This dock lift, operated by the Venue Technician, moves freight from 22 Greys Avenue street level to Rangatira Sub Stage and Rangatira stage level.

- Door Size – 3300mm high by 2700mm wide
- Lift Size – 2900mm wide by 6000mm deep
- Weight Loadings – 1 tonne spread load

### Dock 2 – Internal Dock

This dock allows access via steps to Rangatira Sub Stage.

- External Door Size – 3300mm high by 4400mm wide
- Internal Door Size – 2600mm high by 2900mm wide @ 850mm off ground level (leading to the sub-stage)

### Dock 3 – Basement Dock

Dock 3 provides access to Q's internal passenger lift going to all Q levels, which include:

- 4 (Level 4) – Rangatira Grid Level
- 3 (Level 3) – Rangatira Gods
- 2 (Level 2) – Loft, Gender Neutral Toilets
- 1 (Level 1) – Rangatira Balcony
- G (Ground Level) – Citizen Q / 305 Queen Street, Rangatira Main Audience Entrance and Rangatira Prompt Side Entrance
- LG (Lower Ground) – Rangatira Sub Stage, Green Rooms, Dressing Rooms, Vault, Q Administration Office, Toilets
- B (Basement Dock)

# Deliveries

All courier deliveries should be addressed to **Q Theatre, 22 Greys Avenue, Auckland Central, Auckland 1010.**

## Facilities

### Dressing Rooms

Rangatira has 3 dressing rooms on the Lower Ground level, one floor below the stage.

#### Dressing Room 1

- 2.3m deep x 3m wide (overall dimension excludes bathroom).
- 1-2 make-up positions (individually lit make-up benches).
- 1 hand basin.
- Accessible bathroom, toilet & shower
- 1 x mobile costume rack

#### Dressing Rooms 2 and 3

Dressing Rooms 2 and 3 are connected via an internal door, which can be locked as required

- 4.9m deep x 4.9m wide (overall dimension excludes bathroom).
- 6 make-up positions (individually lit make-up benches).
- 2 hand basins.
- Separate toilet & shower
- 2 x mobile costume rack

### Greenroom

The Greenroom is located on the Lower Ground Level adjacent to the Rangatira dressing rooms. It is a shared facility available to all companies hiring Q Theatre spaces. The room is equipped with a dining table and chairs, fridge/freezer, microwave, hot water Zip, and a full set of crockery and cutlery. Hirers are responsible for maintaining the cleanliness and tidiness of the Greenroom throughout their use.

### Internet Access

Free Wi-Fi is available throughout Q, with the 'Q Visitor' network for public use and a private network accessible back of house.

### Laundry

The laundry is on the Lower Ground level next to the Greenroom and is shared by all Q hirers and the Q hospitality team. It includes a commercial washing machine, separate dryer, iron, ironing board, and garment steamer.

*Please note: washing powder is not provided.*

### Cleaning

Dressing rooms, the Green Room, and backstage areas are cleaned daily. Audience access paths and seating are cleaned daily on show days only. The stage is not included in routine cleaning—clients are responsible for any production-related cleaning. Additional cleaning requested by the client will incur charges.

### Paging and Performance Relay (Tannoy)

A building-wide paging system is installed throughout Q Theatre, covering all public and backstage areas, including the Administration office.

There are two permanently installed paging stations:

- One at the Box Office, for public announcements
- One at the Stage Manager's desk (side of stage in Rangatira), for backstage communication

A third portable paging station is also available and can be deployed as needed. Each station has the capability to page all zones simultaneously or target individual areas.

All venues are equipped with program sound feeds routed to their respective back-of-house areas. Each location is fitted with independent volume control to allow local adjustment as required.

### Hearing-Aid Loop

An Induction Loop system is available in Rangatira, Loft and the Lounge. Balcony or Gods levels in Rangatira have strongest signal. Patrons can tune in to the signal by setting their hearing aids to the "T" position



## Wheelchair Accessibility

All areas of Q Theatre are wheelchair accessible via the passenger lift. Accessible bathrooms are located on the Lower Ground Level in both public and backstage areas, as well as within the public amenities on Level 2.

To move from the Rangatira dressing rooms to the stage level via an accessible route, use of the public lift is required.

## Parking

Q Theatre has up to two parking spaces available by prior arrangement, located at 22 Greys Avenue. These are offered for a fee and are subject to availability.

*Please note: Vehicles parked without prior registration are at risk of being towed.*

# Dimensions, Seating and Staging

## The Deployables

Half of the balcony level on either side of Rangatira is equipped with flyable sections, referred to as 'deployable balconies'. These can be flown in or out to adjust wing height at the stage end and provide greater flexibility in audience capacity and spatial configuration.

## Overall room dimensions

- Width - 12000mm (Prompt side (backstage) extends to 16000mm)
- Length - 23000mm long

## Height (from stage floor)

- Cyc and Tab track rail - 9000mm
- Grid level (lower lighting bar) - 8100mm
- Underside of the ceiling sound baffles - 6900mm
- Gods level floor - 5200mm
- Top of double doors (upstage) - 4555mm
- Underside of deployable balcony (out) - 4400mm
- Balcony level floor - 2600mm
- Stalls/ ground level floor - 0000mm
- Front row of seats when in End-stage - 1100mm
- Substage level - 3540mm

## Stage Weight Loading

- Stage Floor - 700kg per square meter
- Pit Lifts - 700kg per square meter, 3 tonnes total
- Stage Lift - 1.5 tonnes total

## Rangatira Levels

- Ground level 'Stalls'
- Level 1 - Balcony seating
- Level 3 - Gods seating
- Level 4 - Grid access

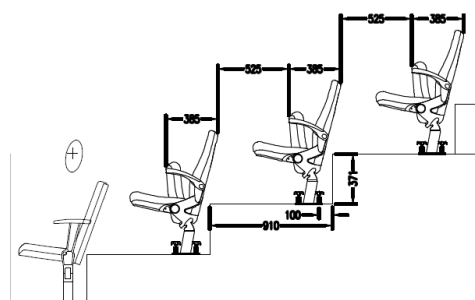
## Seating Blocks

The seating blocks are in fixed sections of 3-rows high, by 6-seats wide (or 4-seats and a set of treads). There are also loose seat rows, joined in groups of 2 or 3, for the front row and balcony level seats. Gods seating is a combination of stools and seats.

## Seating Block Dimensions

*\*does not include loose front-row of seats*

- Block Width 3000mm
- Block Depth 2800mm
- Height to top handrail 2340mm
- Tread/ step height 0200mm





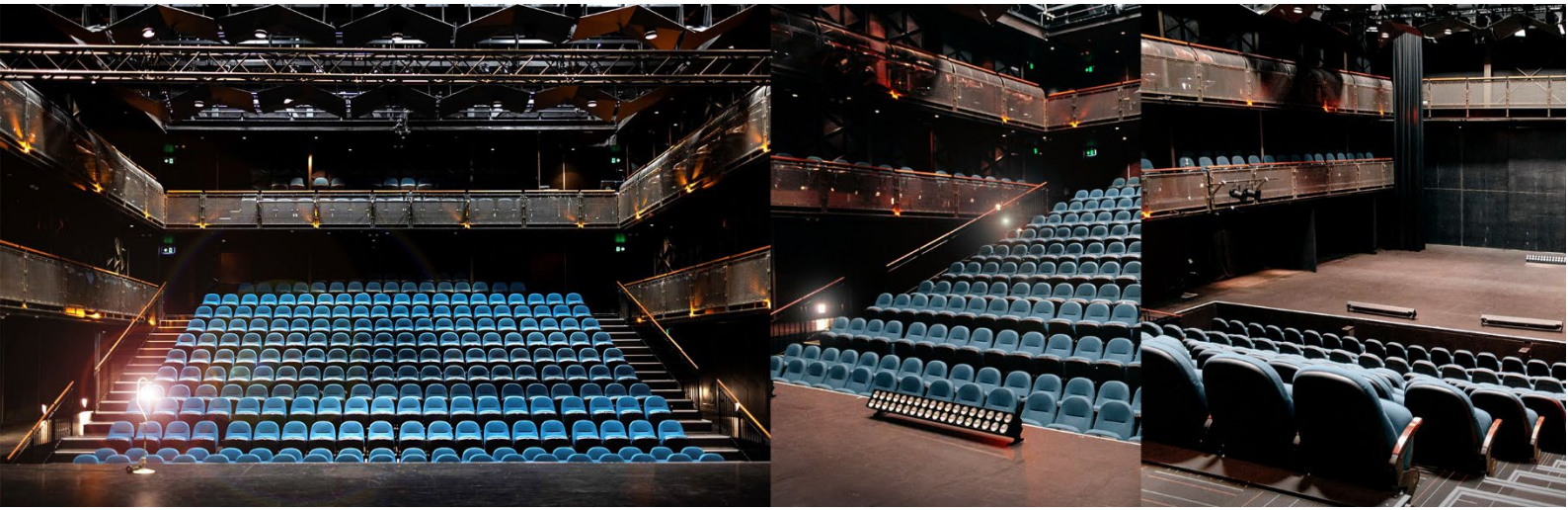
# Rangatira Seating & Staging Configurations

The seating capacity ranges from 338 – 470, depending on the chosen configuration.

## End On (Standard Venue Hire Inclusion)

Capacity – 338 seats + 3 wheelchair positions

Stage Size – 12,250mm wide x 9500mm deep (depth with cyclorama in is 9200mm, or with rear-tabs in is 8700mm)



## Endstage Extended

Capacity – 446 (without deployable –galleries) – 470 (with the deployable galleries) + 3 wheelchair positions

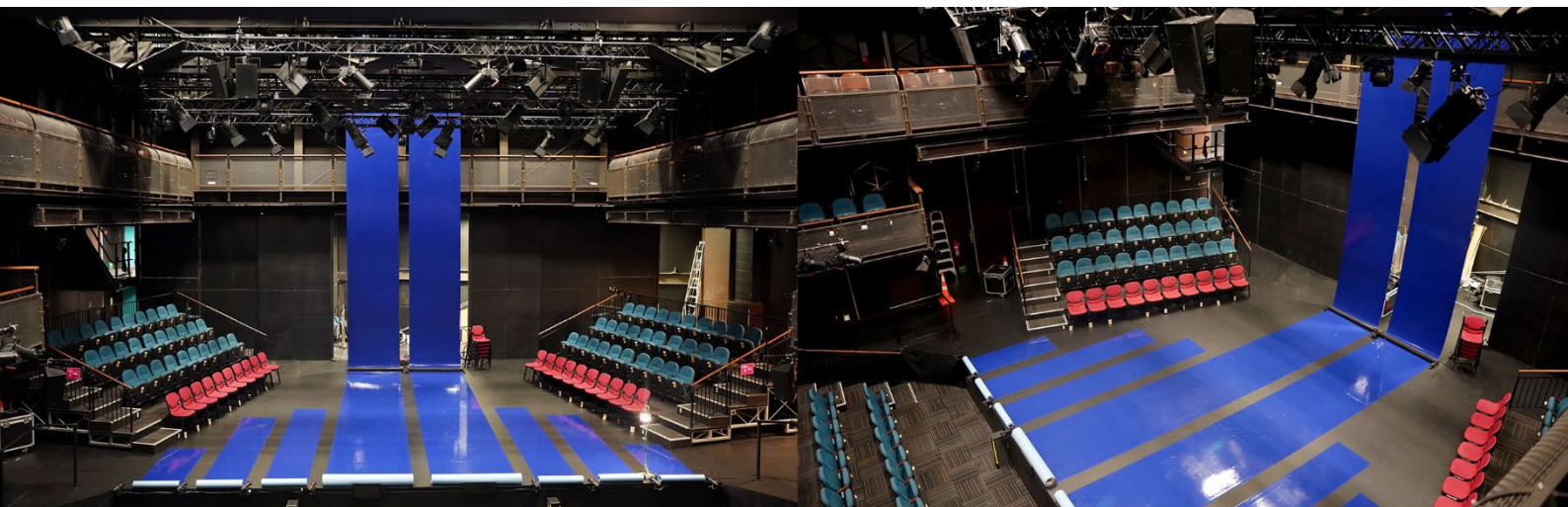
Stage Size – 10,000mm wide x 5000mm deep x 1000mm high



## Thrust

Capacity – 414 seats + 3 wheelchair positions

Stage Size – 8100mm wide x 9500mm deep





### **In The Round**

Capacity - 402 seats + 3 wheelchair positions

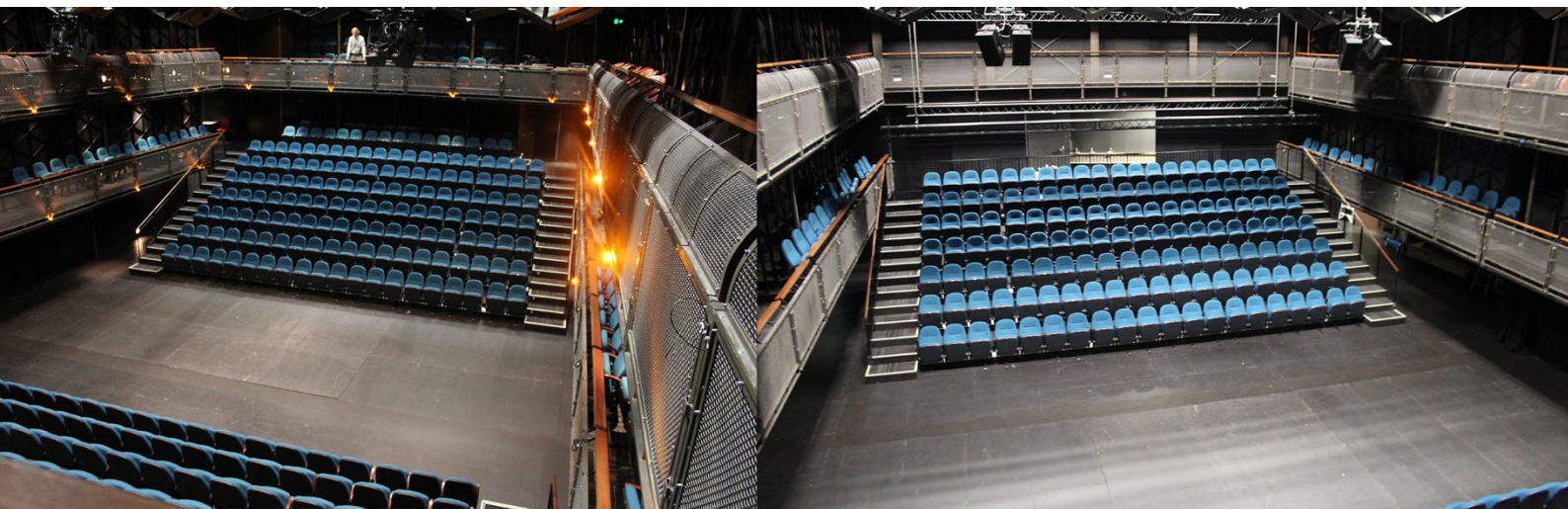
Stage Size - 4200mm wide x 9900mm deep



### **Short Traverse**

Capacity - 448 seats + 3 wheelchair positions

Stage Size - 12,250mm wide x 6100mm deep



### **Long Traverse**

Capacity - 418 seats + 6 wheelchair positions

Stage Size - 4200mm wide x 16500mm deep





### Flat Floor

Floor Capacity - up to 500 persons

Room Size - 23000mm long x 12000mm wide

### Other / Custom

There is a limitless number of stage and seating configuration options. please enquire if you have a custom configuration in mind.

## Staging Risers

Stage risers (2000mm x 1000mm) are available for hire, along with a range of leg heights and stage skirts, subject to availability.

Stage skirts and treads are available to suit riser heights of 320mm and 1000mm.

## Masking

Drapes are included in venue hire, however, the labour for custom installation and reset is not included.

Please see Loft Technical Inclusions Equipment List for more specific information (separate document).



'Mahuta' Music Event 2024



Corporate Event 2024

# Lighting and Audio

Rangatira includes a General Wash Rig and audio equipment as part of the standard venue hire. Additional charges will apply for any custom lighting design, including equipment and labour to rig and reset. For detailed technical specifications, available equipment, and hire options, please refer to Q's Rangatira Technical Equipment Lists (separate documents).

## Control and Dimming

Lighting Console XE 20 ETC consols + 2 touch screen monitors  
Dimmers 285 x 10 amp Hard Wired Circuit Strand Dimmers

## DMX Distribution Network

DMX is distributed throughout the venue via installed nodes, each configured to support four universes (expandable as required). Data is transmitted over Ethernet through the dedicated lighting network and routed to the dimmers. Fixed nodes are located across the stage traps, galleries, and grid, with portable nodes also available for flexible deployment. If you are bringing your own lighting console, it must connect via one of the venue's input nodes to integrate with the lighting network.

## House Lights

House lights are DMX-controllable via the lighting desk. Final house light levels are set at the discretion of the venue.

## Audio Control and Main PA

Sound Control 1 x Yamaha LS9-32 Digital Sound Console  
1 x Meyer Galileo Callisto 616 Loudspeaker Management System  
1 x Yamaha SB168-ES Ethersound Stage Box 16 IN/8 OUT (installed in patch room)

Speakers 8 x Meyer UPJ-1P Active Loudspeakers  
6 x Meyer USW-1P Active Dual 15" Subs – suitable for vocal reinforcement

## Audio Patching

There are 16 hard-wired female sound inputs across all the floor traps in Rangatira, and 16 more female inputs across the wall panels on each level. Sound patch bay is on Grid Level (Level 4).  
There are also 2x 12 way multicore looms (stage box) available by prior arrangement.

# Power

## 3 Phase Power

Sub-Stage Level (LG) 2x 63A CEE-Form Sockets in loading dock, not RCD protected  
2 x PDL 56 series 32 amp 3-phase outlets, one at each pillar next to each technical patch

Stage (Level G) 2x PDL 56 series 32 amp 3-phase outlets, one either side of Stage in the upstage corners

Balcony/ Gods Level (none)

Grid (Level 4) On each bridge there are 2x PDL 56 series 32 amp 3-phase outlets  
Dimmer Room: 1x PDL 56 series 32 amp 3-phase outlet

## 10 AMP Power

Every level of Rangatira (ex. sub-stage) has 10-amp power points for both Lighting and Sound. Floor traps on the stage, and patch cupboards around the walls provide access to patch points for sound, lighting, AV, comms and data. There are Wieland tail connectors on balcony and Gods levels. Cables can be run through the floor traps from upstage centre to the substage \*(for OSB trucks etc.)

The dimmer room, sound & AV patch rooms are situated in the grid. Lighting is controlled by saturated dimming, but sound needs to be physically patched or run through the digital snake / stage box (see Audio notes above).

A Registered Electrician approved by Q is required to undertake any wiring into the distribution boards.

## Blues / Working Lights

There is blue-light and work-light available backstage, in the sub-stage and grid. The control panel is situated next to the standard Stage Management position.



# Rigging, Flying and Access Equipment

## Chain Motors and Truss

Motors can be hung off beam trolleys (which easily move along the RSJ beams within each bay), fixed beam clamps, or from a steel stop, depending on position within the grid.

|              |                                                                                                                                                                                                                                                 |
|--------------|-------------------------------------------------------------------------------------------------------------------------------------------------------------------------------------------------------------------------------------------------|
| Motors       | 10 x 500kg chain motors                                                                                                                                                                                                                         |
| Truss        | 20 x 2m 300mm box truss, powder-coated black<br>4 x 1m 300mm box truss, powder-coated black<br>4 x 0.5m 300mm box truss, powder-coated black                                                                                                    |
| Roof I-Beams | Upper beam height (from stage) 10,300mm<br>Lower beam height (from stage) 10,000mm<br>Max load on all beams - 24 tonne<br>Max load on any one beam - 8 tonne or 1.5 tonne/m<br>Max individual point load - 1.2 tonne (minimum spacing of 500mm) |

## Grid (Level 4)

Rangatira's lighting grid level is a catwalk-style grid with six (6) bridges covering the space, creating five (5) bays each. Bays and bridges are numbered from upstage to downstage (dock end to main entrance end). The grid is carpeted and wheelchair accessible.

|                |                                                      |        |
|----------------|------------------------------------------------------|--------|
| Grid (Level 4) | Handrail / upper bar height (from Stage)             | 9150mm |
|                | Lower lighting bar height (from Stage)               | 8100mm |
|                | Underside of Ceiling Sound Baffles high (from stage) | 7300mm |
|                | Underside of Ceiling Sound Baffles low (from stage)  | 7000mm |
|                | Max point load                                       | 75kg   |
|                | Max spread load per meter                            | 100kg  |

## Level G, 2 and 3

The Grid, Gods and Balcony all have Unistrut installed to the underside of the level, allowing the ability to attach scaffolding pipe to create rigging positions. In Balcony and Gods level there are brackets and scaffolding pipe that can be installed on the front of the balustrades/handrails to create additional rigging positions.

|                   |                                                     |        |
|-------------------|-----------------------------------------------------|--------|
| Gods (Level 3)    | Unistrut height (from stage)                        | 7600mm |
|                   | Balustrade height (from stage)                      | 5600mm |
|                   | Max point load                                      | 75kg   |
|                   | Max spread load per meter                           | 100kg  |
| Balcony (Level 2) | Unistrut height (from stage)                        | 4800mm |
|                   | Balustrade height (from stage)                      | 3000mm |
|                   | Max point load                                      | 75kg   |
|                   | Max spread load per meter                           | 100kg  |
| Stage (Level G)   | Unistrut height (from stage) Deployable-gallery out | 4350mm |
|                   | Unistrut height (from stage) Deployable-gallery in  | 2200mm |
|                   | Max point load                                      | 75kg   |
|                   | Max spread load per meter                           | 100kg  |

## Access Equipment

Q can provide the following access equipment:

1x Genie 1-Person electric lift. Max Height: 7500mm

Various Ladders. Max Height: 3900mm

## Operating Position

Standard operator's position is on the Gods level (level 3) of the Rangatira, house left.

There is space for two operators.

We can accommodate an alternative position by prior arrangement.

## Stage Manager's Position

The standard Stage Management position is in the downstage Prompt side corner. The Stage Manager's desk has a paging microphone, stage front view monitor and communications device.

The SM position can be moved to stage right, by prior arrangement.

Cue-light patching available.

## Health & Safety

The Q Theatre Venue Hire Agreement obliges clients to comply with both local legislation and venue policies.

### Alcohol

Q Theatre is a licensed venue and strictly enforces our alcohol policy. Only alcohol purchased from Q's bar may be consumed, and only within the Rangatira Green Room.

If consumption or behaviour is deemed excessive, performers or crew may be asked to leave by the Duty Manager or Venue Technician. Alcohol found in any licensed areas outside of these conditions will be confiscated and may result in removal from the premises. No alcohol is permitted on LG 22 Greys Avenue entrance steps.

### Cigarettes & Vaping

Q is a smoke-free premise, which includes all e-cigarettes and vaping devices. There is no smoking allowed outside Q on Queen Street. No smoking is permitted on the LG 22 Greys Avenue entrance steps.

If your event requires vaping onstage, please get in touch with Q Production.

### Electrical Equipment

All electrical equipment brought into Q Theatre must have a current test tag dated within the last 12 months. Untested equipment cannot be used in the venue.

Testing and tagging services are available onsite for a fee if required.

### Fire Exits

All fire exits must remain clear of obstruction at all times.

### Fire Detection Systems

Q Theatre has two fire detection systems. All areas are covered by rapid-rise heat detection sprinklers. Rangatira, Loft, Lounge, and Citizen Q also have a double-knock smoke and CO detection system, allowing the use of theatrical smoke and haze without isolating the system.

For any CO-generating activities (e.g. fire effects, pyrotechnics, hot work, or running engines), the fire detection system must be isolated in the affected areas. This must be arranged in advance through Q Production and incurs a charge, as isolation is performed by an external provider.

### Flame Retardant Scenery

All scenery, cloths, and large props must be non-flammable or treated with an approved flame retardant. Proof of treatment is required. Untreated items will not be permitted in the venue.

### Flying

Only Q staff may operate the venue's chain motors. All client rigging or flying requires sign-off by the Facilities & Technical Manager. All general rigging and flying equipment must have a minimum safety factor of 5 to 1. Any systems involving the flying of people must have a minimum safety factor of 10 to 1 and must have a Certificate of Proof of Load.



### Safety Lines

All lamps and speakers must have safety wires. All fibre slings must have back up steel safety where deemed necessary by the Technical Manager.

### Special Effects / Fire Arms / Pyrotechnics

The use of open flames and pyrotechnics requires prior approval from Q Production. Pyrotechnic use also requires permits from the Department of Labour and New Zealand Fire Service. Clients must supply their own pyrotechnics and/or firearms safe. Advance notice is required for fire system isolation; associated costs will be charged to the hirer.



Music Concert 2015



Theatre 2013



Corporate Event 2018