

Rangatira

All prices are GST exclusive



Standard Venue Hire	
Configuraton	End On
Capacity	338
Pack In Days Up to 12 hrs occupancy	\$3,400
Event Days Up to 12 hrs occupancy	\$4,000
Venue Overrun Occupancy after 12 hrs Occupancy after 2am	\$350 p/h \$500 p/h

Inclusions:
Front of House Supervisor (4 hrs)
Up to 4 ushers (3 hrs)
Standard 'End On' configuration (Traditional raked seating block, facing large performance area)
Basic lighting equipment and sound system (PA)
Air Conditioning and basic cleaning
Power consumption (T&Cs apply)

Alternative Venue Configurations	Description	Capacity	Additional Price*
Endstage Extended	Raised stage and additional rows added to 'End On'. PA and masking included.	446 - 470	\$4,800
Endstage Reduced	Raised stage added. Audience area is half flat-floor (standing) and half raked seating block. PA and masking included.	392 (124 standing)	\$4,500
Thrust	Two small seating blocks added to the performance area in the 'End On' configuration. PA and masking included	416	\$2,800
Flat Floor	All seating removed, open space. Masking included, PA not included.	500	\$5,500
Other / Custom	Examples include, but not limited to: In-The-Round; Long or Short Traverse; Cabaret	Variable	Variable

* This price reflects the labour and venue related costs to reconfigure the space and is charged in addition to the Standard Venue Hire and Inclusions.



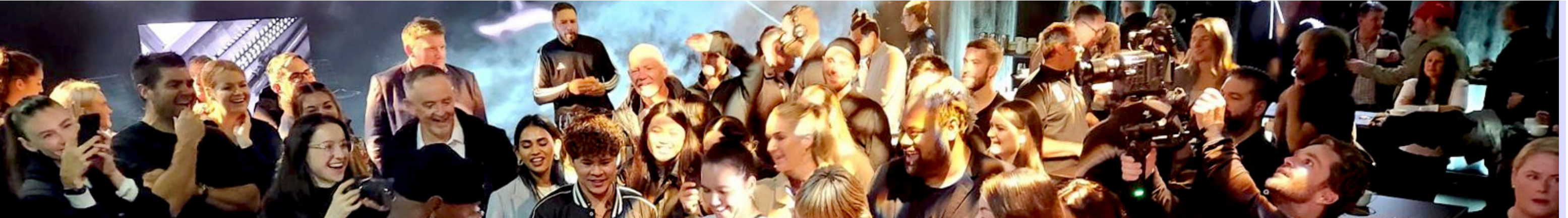


Standard Venue Hire	
Configuration	End On
Capacity	117
Pack In Days Up to 12 hrs occupancy	\$1680
Event Days Up to 12 hrs occupancy	\$1950
Venue Overrun Occupancy after 12 hrs Occupancy after 2am	\$160 p/h \$280 p/h

Inclusions:
Front of House Supervisor (4 hrs)
1 usher (3 hrs)
Standard ‘End On’ configuration (Traditional raked seating block, facing large performance area)
Basic lighting equipment and sound system (PA)
Air Conditioning and basic cleaning
Power consumption (T&Cs apply)

Alternative Venue Configurations	Description	Capacity	Additional Price*
Endstage Extended	Raised stage and additional rows added to ‘End On’. PA and masking included.	182	\$1,480
Endstage Reduced	Raised stage added. Audience area is half flat-floor (standing) and half raked seating block. PA and masking included.	182	\$1,320
Thrust	Two small seating blocks added to the performance area in the ‘End On’ configuration. PA not included.	152	\$3,300
Flat Floor	All seating removed, open space. PA not included.	250	\$2,100
Other / Custom	Examples include, but not limited to: In-The-Round; Long or Short Traverse; Cabaret	Variable	Variable

* This price reflects the labour and venue related costs to reconfigure the space and is charged in addition to the Standard Venue Hire and Inclusions.



Staffing

All prices are GST exclusive



Type	Per Hour	Minimum Call Time	Minimum Charge	Notes
Venue Technician (VT)	\$62	4 hours	\$248	VT's supervise techincal crew provided by Q and are required at all times during occupancy.
Technical Crew	\$52	4 hours	\$208	As required
Show Operator	\$62	4 hours	\$248	As required
Front of House Supervisor	\$40	4 hours	\$160	Up to 4 hrs included on Event Days
Ushers	\$37	3 hours	\$111	Up to 4 ushers for 3 hrs included on Rangatira Event Days; 1 usher for 3 hrs included on Loft Event Days. Additional ushers may be required for some alternative venue configurations and capacities.
Box Office	\$37	3 hours	\$111	As required.

A Venue Technician is required at all times during occupancy to adhere to Q's Health and Safety policy and procedures.

Labour rates between 2:00 AM – 7:00 AM, are charged at time and a half. Penalty rates apply where a hire period includes a public holiday.

All Q's spaces are accessible, and the venue capacities quoted exclude wheelchair positions.

An equipment list showing what is included in the venue hire can be provided. Please note that the labour to rig it, as well as consumables and additional equipment requested, is not included.

When Q has received a production schedule and the technical requirements from an enquirer, Q production and programming departments can draft a full cost estimate, tailored to the information provided.

We recommend a site visit as part of the cost estimate process. Email programme@qtheatre.co.nz

If you require ticketing and/or marketing services for your event, please email marketing@qtheatre.co.nz

Q provides full catering services for your event. Please contact the Visitor Experience team at ve@qtheatre.co.nz