
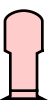

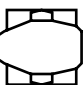
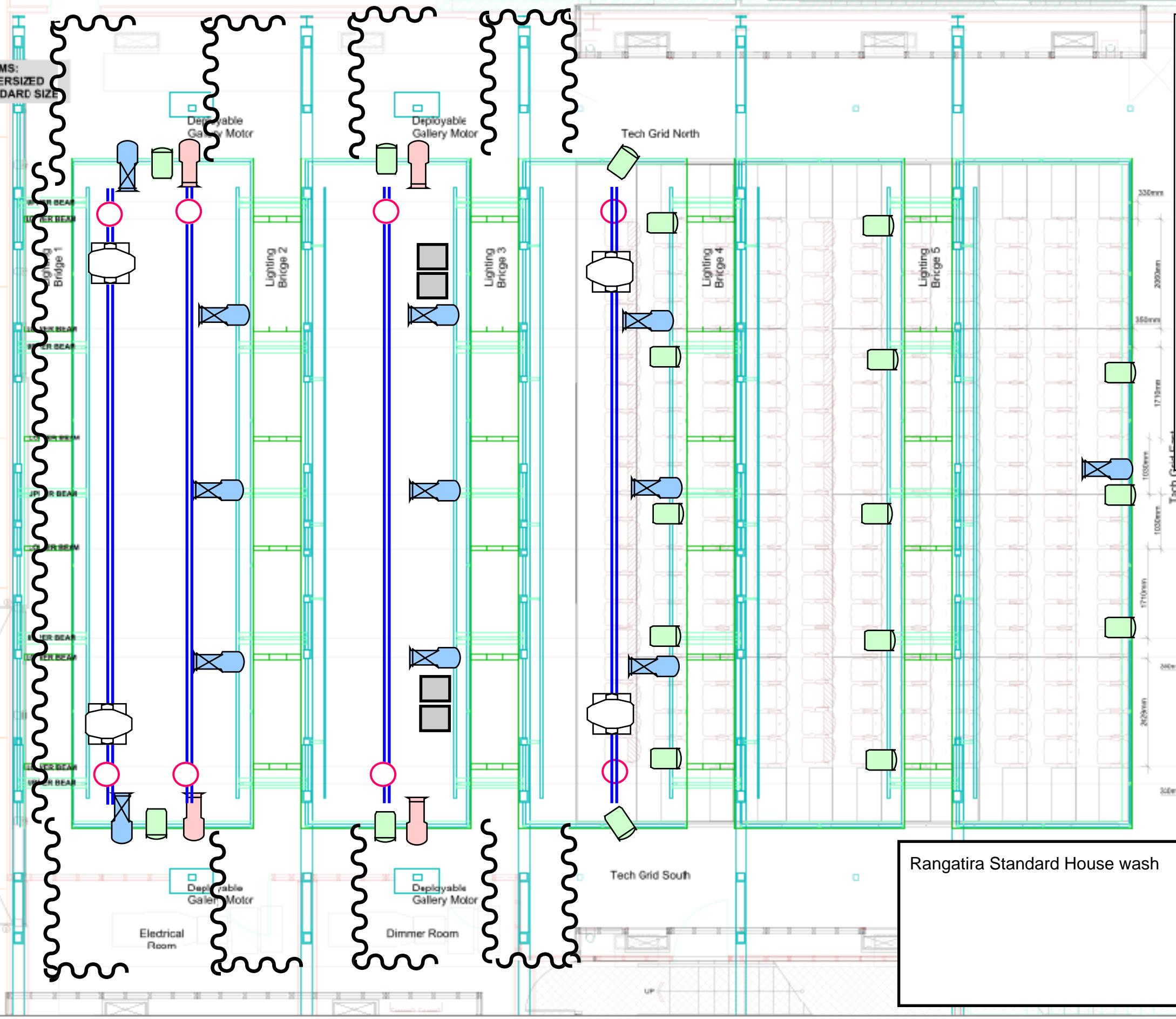


RIGGING BEAMS:
UPPER BEAM - OVERSIZED
LOWER BEAM - STANDARD SIZE

All fixtures open

-  Rama 1200
-  23-50
-  12-28
-  Ayrton Movers



Rangatira Standard House wash

**RANGATIRA
TECH GRID
END ON + GRID**

Block A: 220 x 5m
Block B: NA
Block C: NA
Block D: NA

TOTAL: 220 x Seats



Q Theatre
305 Jaram Street
Auckland 1010
www.qtheatre.co.nz

RANGATIRA

TECH GRID PLAN
R-1.1.4
1/75 @ A3